

FreeBSD, instalacja

Instalacja

```
CD Loader 1.2
```

```
Building the boot loader arguments  
Looking up /BOOT/LOADER... Found  
Relocating the loader and the BTX  
Starting the BTX loader
```

```
BTX loader 1.00  BTX version is 1.01  
Consoles: internal video/keyboard  
BIOS CD is cd0  
BIOS drive A: is disk0  
BIOS drive C: is disk1  
BIOS 638kB/260032kB available memory
```

```
FreeBSD/i386 bootstrap loader, Revision 1.1  
(root@opus.cse.buffalo.edu, Sun May  7 03:20:03 UTC 2006)  
Loading /boot/defaults/loader.conf  
/boot/kernel/kernel text=0x4c8c74 data=0x98120+0x4f08c /
```

Instalacja

Welcome to FreeBSD!

1. Boot FreeBSD [default]
2. Boot FreeBSD with ACPI disabled
3. Boot FreeBSD in Safe Mode
4. Boot FreeBSD in single user mode
5. Boot FreeBSD with verbose logging
6. Escape to loader prompt
7. Reboot

Select option, [Enter] for default
or [Space] to pause timer 0



```
/boot/kernel/acpi.ko text=0x42ed4 data=0x2280+0x10f0 syms=[0x4+0x7ad0+0x4+0xa709
```

```
!
```

Instalacja

sysinstall Main Menu

Welcome to the FreeBSD installation and configuration tool. Please select one of the options below by using the arrow keys or typing the first character of the option name you're interested in. Invoke an option with [SPACE] or [ENTER]. To exit, use [TAB] to move to Exit.

Usage	Quick start - How to use this menu system
Standard	Begin a standard installation (recommended)
Express	Begin a quick installation (for experts)
Custom	Begin a custom installation (for experts)
Configure	Do post-install configuration of FreeBSD
Doc	Installation instructions, README, etc.
Keymap	Select keyboard type
Options	View/Set various installation options
Fixit	Repair mode with CDROM/DVD/floppy or start shell
Upgrade	Upgrade an existing system
Load Config	Load default install configuration
Index	Glossary of functions

[Select] X Exit Install

[Press F1 for Installation Guide]

Instalacja

Disk name: **ad0** FDISK Partition Editor
DISK Geometry: 10402 cyls/16 heads/63 sectors = 10485216 sectors (5119MB)

Offset	Size(ST)	End	Name	PType	Desc	Subtype	Flags
0	10485760	10485759	-	12	unused	0	

Value Required

Please specify the size for new FreeBSD slice in blocks or append a trailing 'M' for megabytes (e.g. 20M).

[OK] **Cancel**

The follow

- A = Use Entire Disk G = set Drive Geometry C = Create Slice F = 'DD' mode
- D = Delete Slice Z = Toggle Size Units S = Set Bootable ! = Wizard m.
- T = Change Type U = Undo All Changes Q = Finish

Use F1 or ? to get more help, arrow keys to select.

Instalacja

Install Boot Manager for drive ad0?

FreeBSD comes with a boot selector that allows you to easily select between FreeBSD and any other operating systems on your machine at boot time. If you have more than one drive and want to boot from the second one, the boot selector will also make it possible to do so (limitations in the PC BIOS usually prevent this otherwise). If you do not want a boot selector, or wish to replace an existing one, select "standard". If you would prefer your Master Boot Record to remain untouched then select "None".

NOTE: PC-DOS users will almost certainly require "None"!

BootMgr	Install the FreeBSD Boot Manager
Standard	Install a standard MBR (no boot manager)
None	Leave the Master Boot Record untouched

[**OK**]

Cancel

[Press F1 to read about drive setup]

Instalacja

```
FreeBSD Disklabel Editor
Disk: ad0      Partition name: ad0s1   Free: 9215073 blocks (4499MB)
Disk: ad0      Partition name: ad0s2   Free: 1270080 blocks (620MB)

Part      Mount      Size Newfs  Part      Mount      Size Newfs
-----  -

```

Value Required

Please specify a mount point for the partition

[OK] Cancel

```
The following commands are valid here (upper or lower case):
C = Create          D = Delete      M = Mount pt.
N = Newfs Opts     Q = Finish     S = Toggle SoftUpdates  Z = Custom Newfs
T = Toggle Newfs   U = Undo       A = Auto Defaults      R = Delete+Merge

Use F1 or ? to get more help, arrow keys to select.
```

Instalacja

Choose Distributions

As a convenience, we provide several "canned" distribution sets. These select what we consider to be the most reasonable defaults for the type of system in question. If you would prefer to pick and choose the list of distributions yourself, simply select "Custom". You can also pick a canned distribution set and then fine-tune it with the Custom item.

Choose an item by pressing [SPACE] or [ENTER]. When finished, choose the Exit item or move to the OK button with [TAB].

↑(-)

All

All system sources, binaries and X Window System

Reset

Reset selected distribution list to nothing

[] 4 Developer

Full sources, binaries and doc but no games

[X] 5 X-Developer

Same as above + X Window System

[] 6 Kern-Developer

Full binaries and doc, kernel sources only

[] 7 X-Kern-Developer

Same as above + X Window System

[] 8 User

Average user - binaries and doc only

[] 9 X-User

Same as above + X Window System

↓(+)

[OK]

Cancel

[Press F1 for more information on these options.]

Instalacja

User Confirmation Requested

Would you like to install the FreeBSD ports collection?

This will give you ready access to over 13,300 ported software packages, at a cost of around 440MB of disk space when "clean" and possibly much more than that when a lot of the distribution tarballs are loaded (unless you have the extra discs available from a FreeBSD CD/DVD distribution and can mount them on /cdrom, in which case this is far less of a problem).

The ports collection is a very valuable resource and well worth having on your /usr partition, so it is advisable to say Yes to this option.

For more information on the ports collection & the latest ports, visit:
<http://www.freebsd.org/ports>

[Yes]

No

Instalacja

Choose Installation Media

FreeBSD can be installed from a variety of different installation media, ranging from floppies to an Internet FTP server. If you're installing FreeBSD from a supported CD/DVD drive then this is generally the best media to use if you have no overriding reason for using other media.

- | | |
|----------------------|---|
| 1 CD/DVD | Install from a FreeBSD CD/DVD |
| 2 FTP | Install from an FTP server |
| 3 FTP Passive | Install from an FTP server through a firewall |
| 4 HTTP | Install from an FTP server through a http proxy |
| 5 DOS | Install from a DOS partition |
| 6 NFS | Install over NFS |
| 7 File System | Install from an existing filesystem |
| 8 Floppy | Install from a floppy disk set |
| 9 Tape | Install from SCSI or QIC tape |
| X Options | Go to the Options screen |

[**OK**]

Cancel

[Press F1 for more information on the various media types]

Instalacja

User Confirmation Requested

Last Chance! Are you SURE you want continue the installation?

If you're running this on a disk with data you wish to save then WE STRONGLY ENCOURAGE YOU TO MAKE PROPER BACKUPS before proceeding!

We can take no responsibility for lost disk contents!

[Yes]

No

Instalacja

```
[ Progress ]  
Extracting ssbin into /usr/src directory...  
████████████████████████████████████████████████████████████████████████████████  
100%
```

1024 bytes read from ssbin dist, chunk 1 of 1 @ 1.0 KBytes/sec.

Instalacja

User Confirmation Requested

Do you want this machine to function as a network gateway?

Yes

[No]

Instalacja

User Confirmation Requested
Would you like to enable Linux binary compatibility?
[Yes] **No**

Instalacja

User Confirmation Requested

The FreeBSD package collection is a collection of thousands of ready-to-run applications, from text editors to games to WEB servers and more. Would you like to browse the collection now?

[Yes]

No

Instalacja

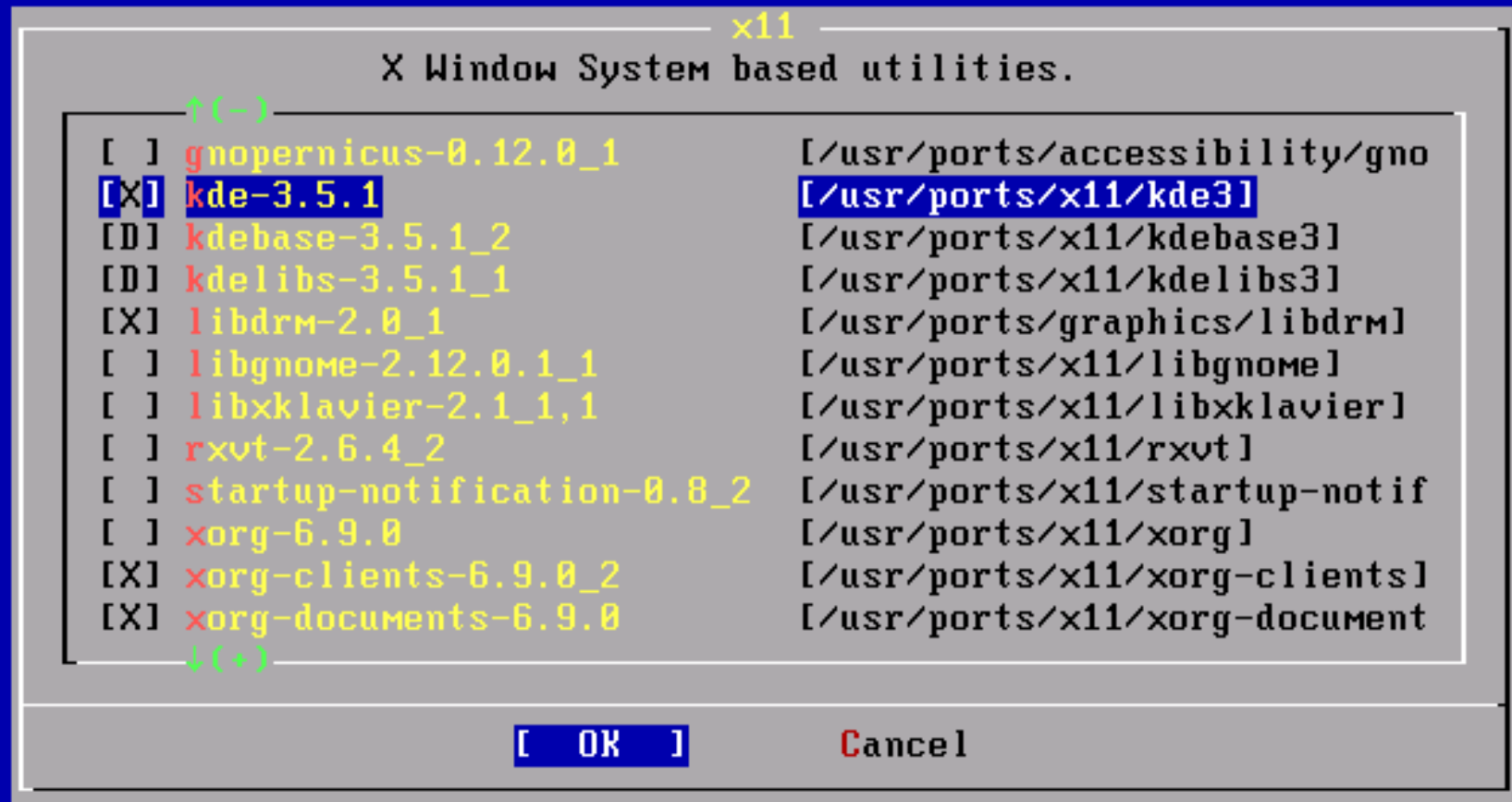
Package Selection

To mark a package, move to it and press SPACE. If the package is already marked, it will be unmarked or deleted (if installed). Items marked with a 'D' are dependencies which will be auto-loaded. To search for a package by name, press ESC. To select a category, press RETURN. NOTE: The All category selection creates a very large submenu! If you select it, please be patient while it comes up.

All	All available packages in all categories.
accessibility	Ports to help disabled users.
afterstep	Ports to support the AfterStep window manager.
archivers	Utilities for archiving and unarchiving data.
astro	Applications related to astronomy.
audio	Audio utilities - most require a supported sound card.
COMMS	Communications utilities.
converters	Format conversion utilities.
databases	Database software.
deskutils	Various Desktop utilities.
devel	Software development utilities and libraries.
dns	Domain Name Service tools.
↓(+)	

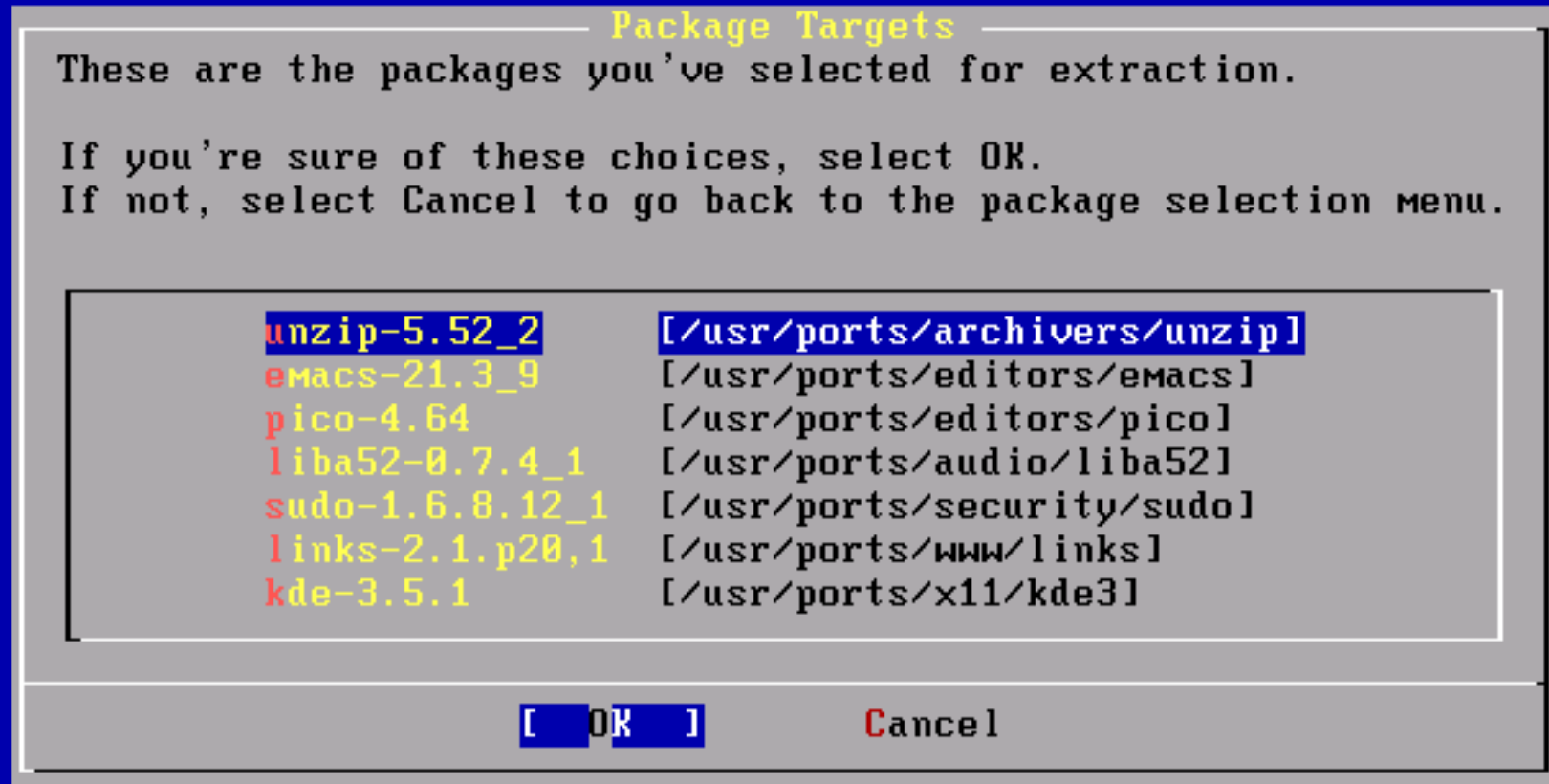
[OK] Install

Instalacja



The "meta-port" for KDE

Instalacja



Instalacja

User and Group Management
Add a new user

Login ID:	UID:	Group:	Password:
<input type="text" value="mic"/>	<input type="text" value="1002"/>	<input type="text" value="michal"/>	<input type="text" value="***"/>
Full name:		Member groups:	
<input type="text" value="User &"/>		<input type="text" value="wheel"/>	
Home directory:	Login shell:		
<input type="text" value="/home/mic"/>	<input type="text" value="/usr/local/bin/bash"/>		

[The user's login shell (leave blank for default)]

Instalacja

FreeBSD Configuration Menu

If you've already installed FreeBSD, you may use this menu to customize it somewhat to suit your particular configuration. Most importantly, you can use the Packages utility to load extra "3rd party" software not provided in the base distributions.

↑(-)

Fdisk	The disk Slice (PC-style partition) Editor
Label	The disk Label editor
User Management	Add user and group information
Console	Customize system console behavior
Time Zone	Set which time zone you're in
Media	Change the installation media type
Mouse	Configure your mouse
Networking	Configure additional network services
Security	Configure system security options
Startup	Configure system startup options
TTYs	Configure system ttys.
Options	View/Set various installation options

↓(+)

[**OK**]

Cancel

[Press F1 for more information on these options]

Instalacja

sysinstall Main Menu

Welcome to the FreeBSD installation and configuration tool. Please select one of the options below by using the arrow keys or typing the first character of the option name you're interested in. Invoke an option with [SPACE] or [ENTER]. To exit, use [TAB] to move to Exit.

Usage	Quick start - How to use this menu system
Standard	Begin a standard installation (recommended)
Express	Begin a quick installation (for experts)
Custom	Begin a custom installation (for experts)
Configure	Do post-install configuration of FreeBSD
Doc	Installation instructions, README, etc.
Keymap	Select keyboard type
Options	View/Set various installation options
Fixit	Repair mode with CDROM/DVD/floppy or start shell
Upgrade	Upgrade an existing system
Load Config	Load default install configuration
Index	Glossary of functions

[Select] X Exit Install

[Press F1 for Installation Guide]